

CO

RUBINETTI PER GAS TECNICI

TECHNICAL GASES TAPS

ROBINETS POUR GAZ TECHNIQUES

GRIFOS PARA GAS TÉCNICO

Distribuito da:



DAL 1945 PARTNER PER IL
LABORATORIO CHIMICO

www.labotech2000.it e-mail: info@labotech2000.it
PEC: infolabotech2000@pec.it

LABOTECH2000 SRL

Uff. comm. 20090 Cusago (MI)

V.le Europa 72 D/11

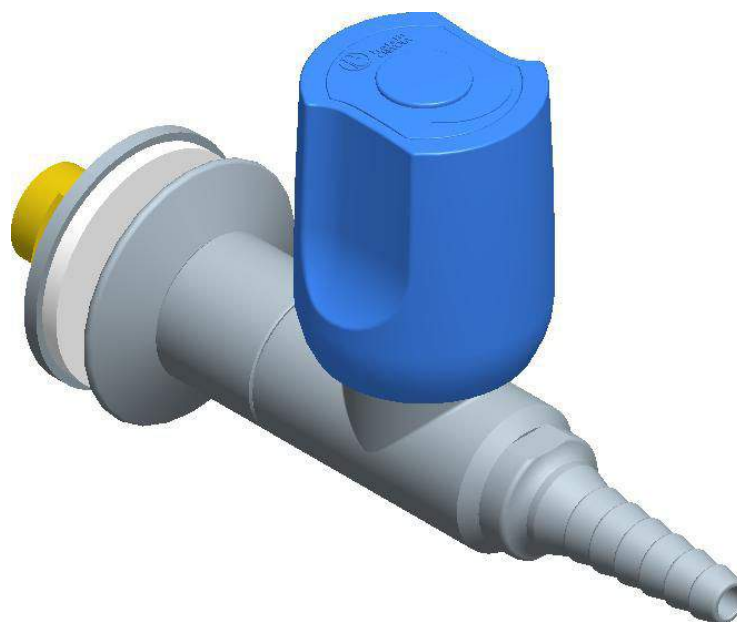
Tel.0290394213 Fax.0290393715

Seda Legale: 20100 Milano

C.so P.ta Vittoria 14

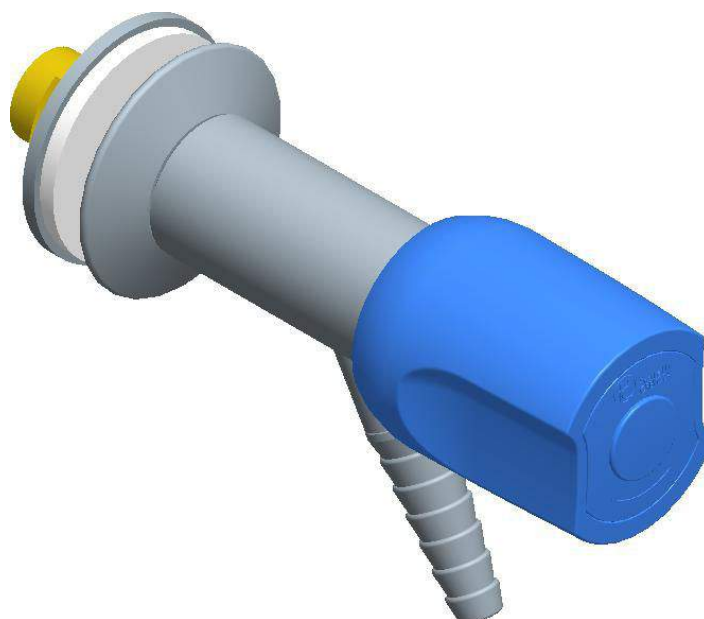
Part. IVA 13308530156

R.E.A. n. 1636581



CO3000

Rubinetto dritto maniglia alta
Straight tap high handle



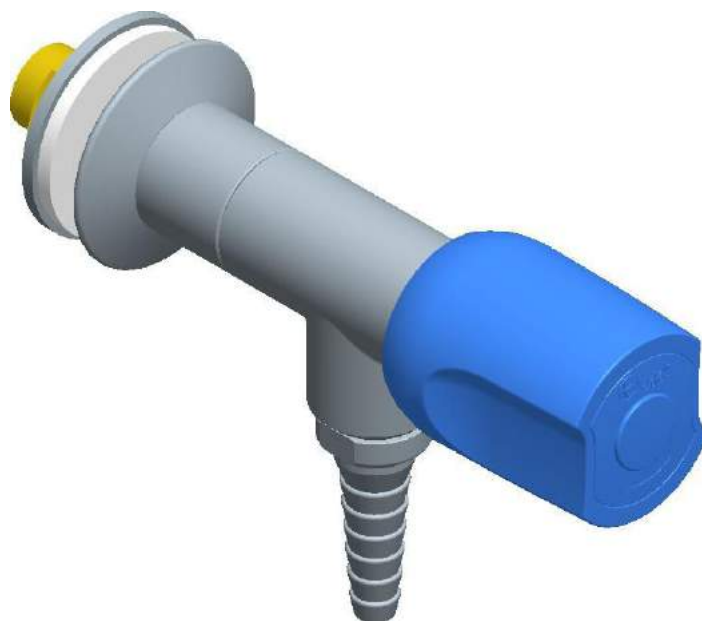
CO3001

Rubinetto 45° maniglia frontale
45° tap frontal handle



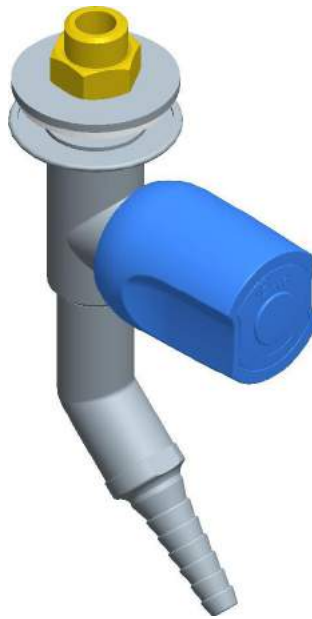
CO3002

Rubinetto 45° maniglia 45°
45° tap 45° handle



CO3003

Rubinetto diritto maniglia frontale e portagomma 90°
Straight tap 90° nozzle and frontal handle



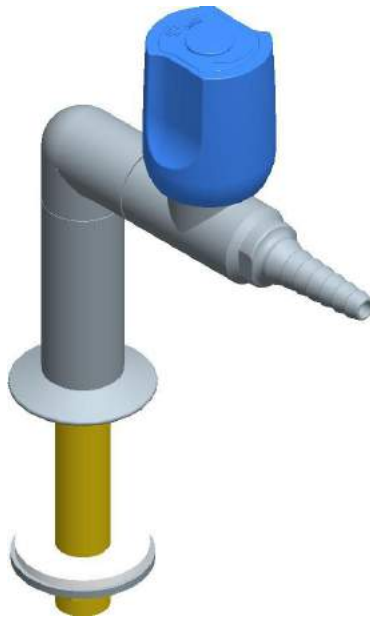
C03004

Rubinetto verticale con portagomma 45°
Vertical tap with 45° nozzle



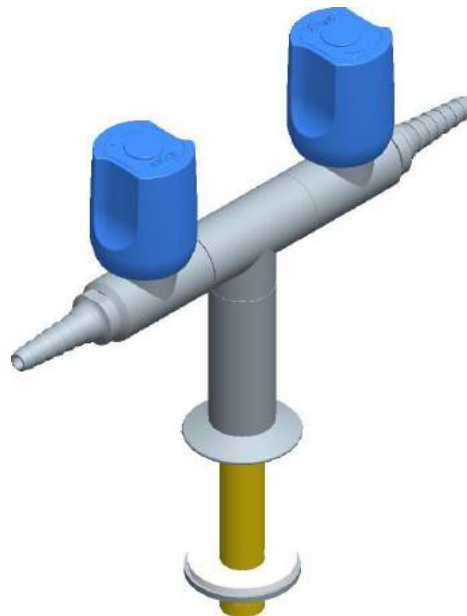
C03005

Rubinetto con portagomma 90°
Tap with 90° nozzle



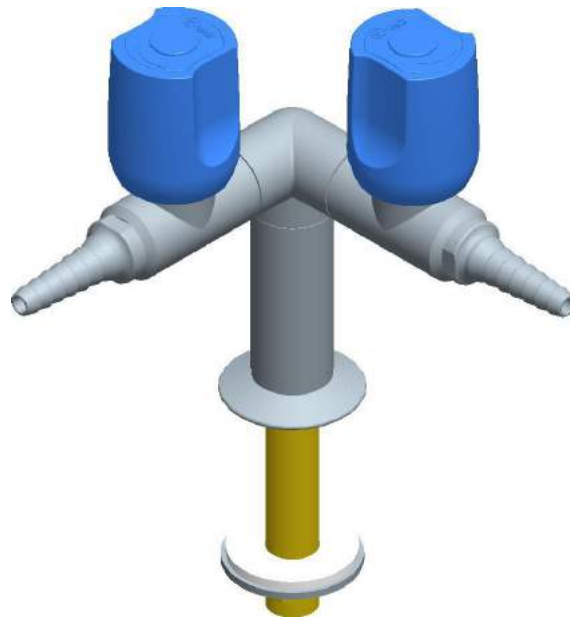
C03010

Colonna a L con maniglia alta
L standout with high handle



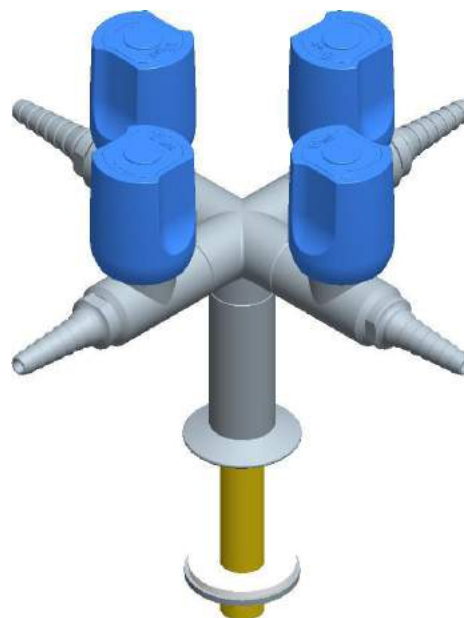
C03011

Colonna a T con maniglie alte
T standout with high handles



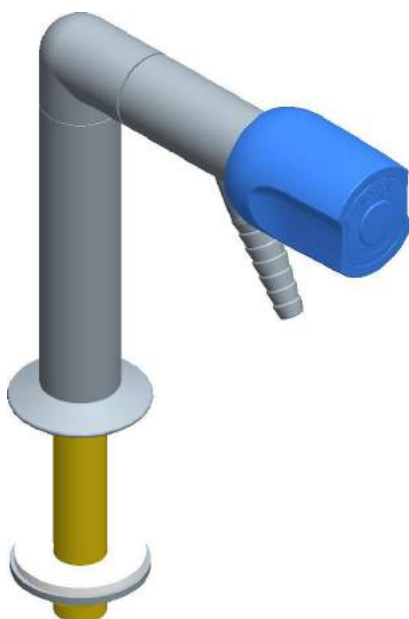
C03012

Colonna a V con maniglie alte
V standout with high handles



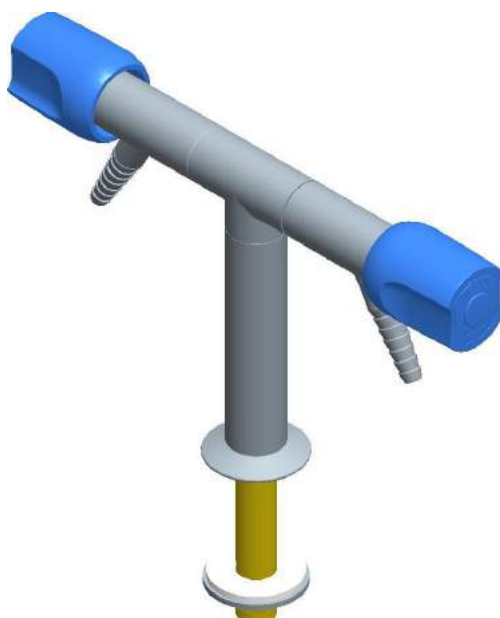
C03013

Colonna a X con maniglie alte
X standout with high handles



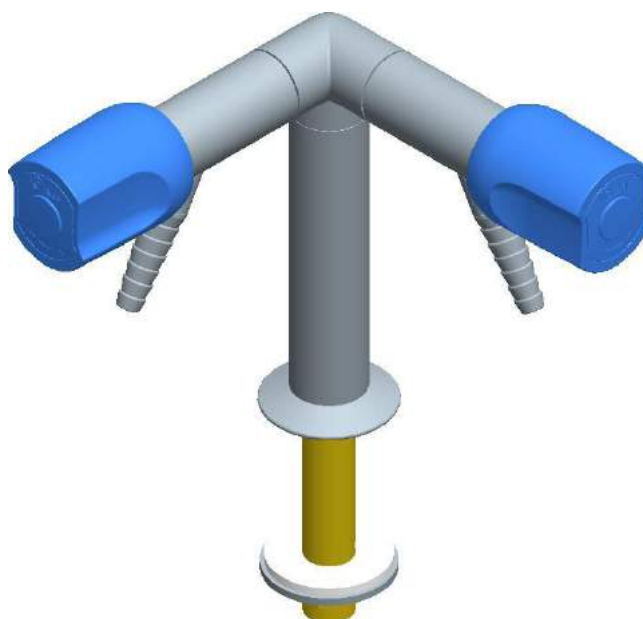
C03014

Colonna a L con maniglia frontale e portagomma 45°
L standout with 45° nozzle and frontal handle



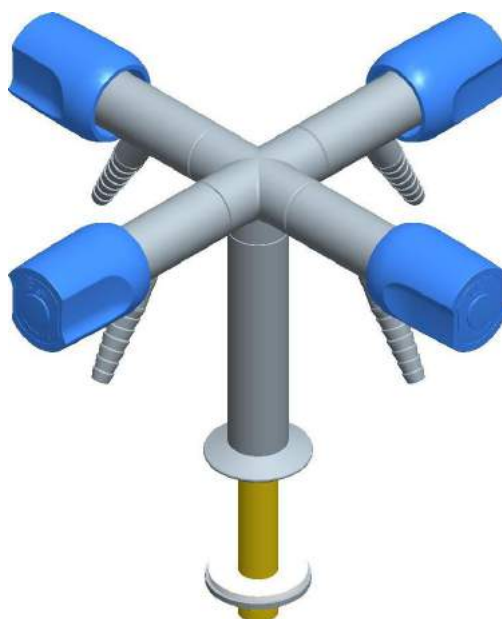
C03015

Colonna a T con maniglie frontali e portagomma 45°
T standout with 45° nozzle and frontal handles



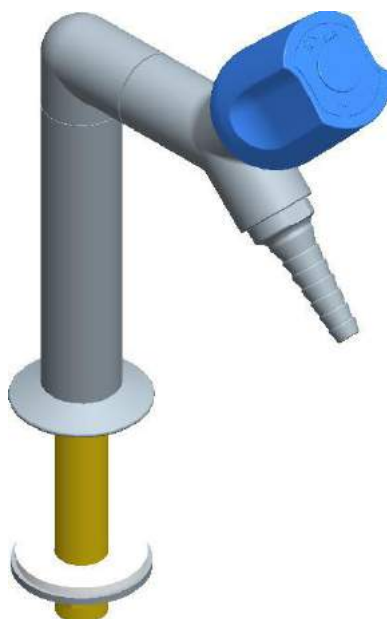
C03016

Colonna a V con maniglie frontali e portagomma 45°
V standout with 45° nozzle and frontal handles



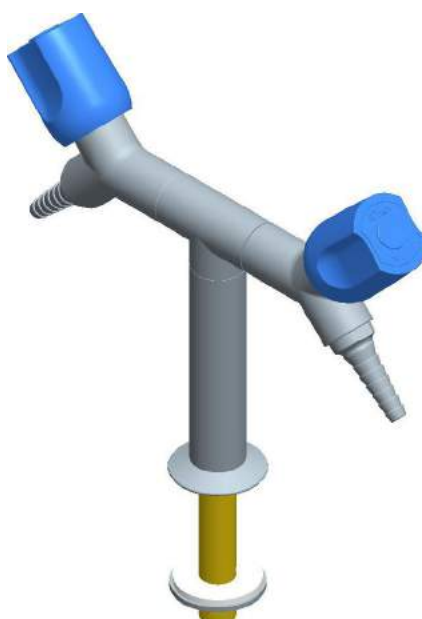
C03017

Colonna a X con maniglie frontali e portagomma 45°
X standout with 45° nozzle and frontal handles



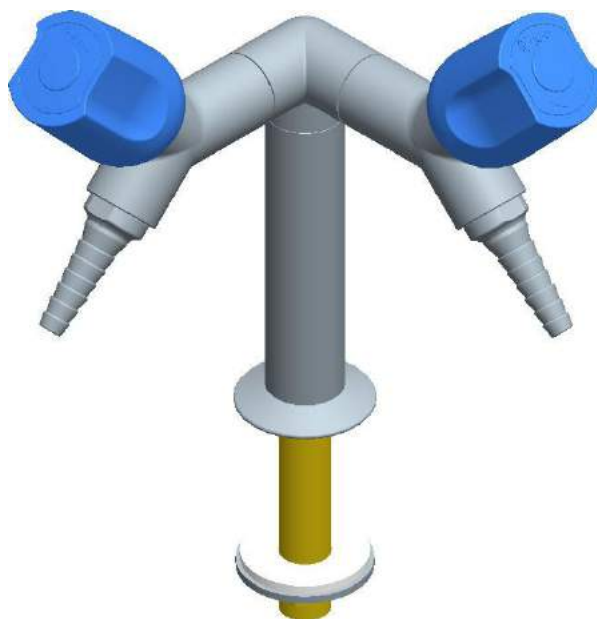
CO3018

Colonna a L con maniglia 45° e portagomma 45°
L standout with 45° nozzle and 45° handle



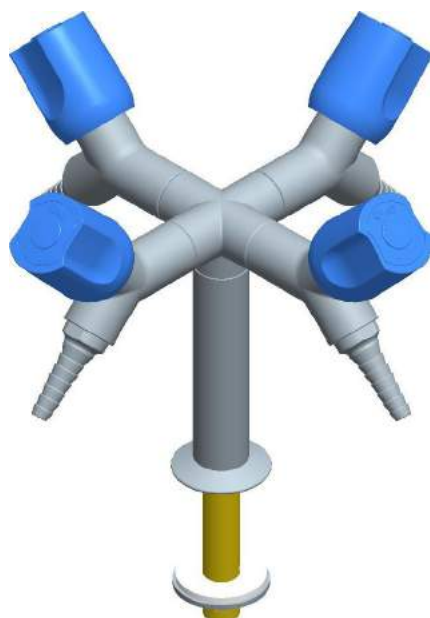
CO3019

Colonna a T con maniglia 45° e portagomma 45°
T standout with 45° nozzle and 45° handles



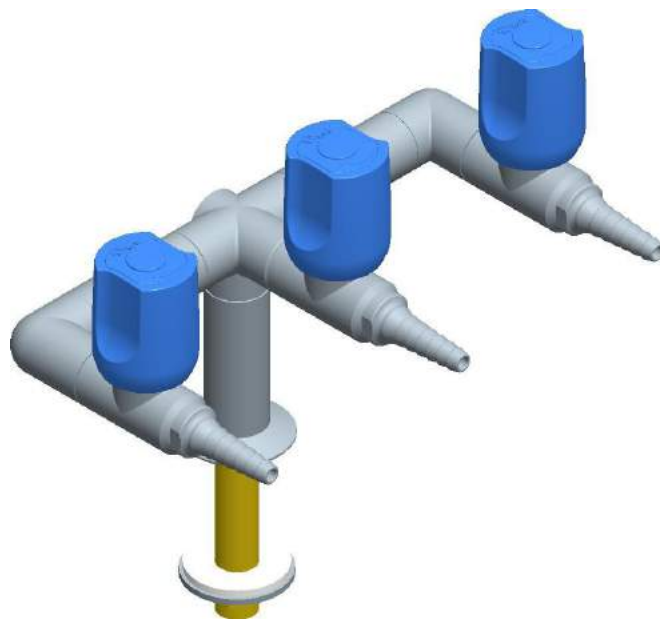
CO3020

Colonna a V con maniglie 45° e portagomma 45°
V standout with 45° nozzle and 45° handles



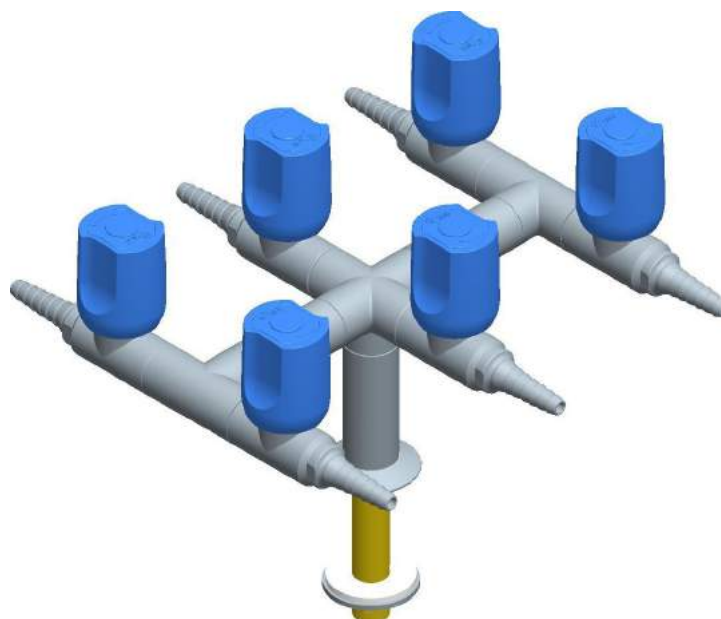
CO3021

Colonna a X con maniglie 45° e portagomma 45°
X standout with 45° nozzle and 45° handles



C03022

Colonna 3 vie con maniglie alte
3-way standout high handles



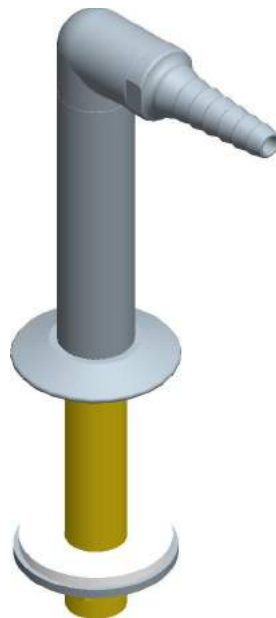
C03023

Colonna 6 vie con maniglie alte
6-way standout with high handles



C03024

Beccuccio 45°
45° connection nozzle



C03025

Beccuccio da banco
Bench-mounted nozzle



CO3026

Beccuccio 90° da parete
Wall-mounted 90° nozzle



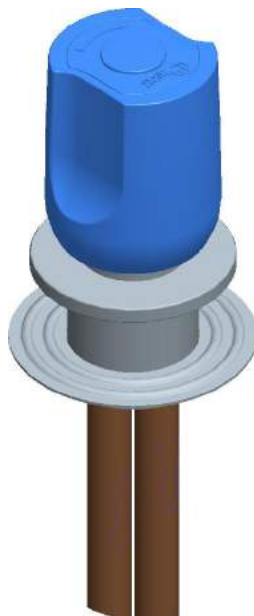
CO3038

Comando per cappa montaggio frontale
Remote control for fume cupboard frontal mounting



CO3039

Comando per cappa montaggio frontale con flessibili
Remote control for fume cupboard frontal mounting with flex



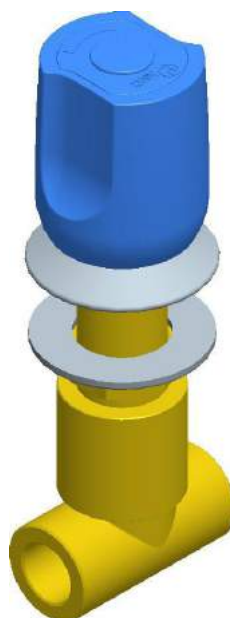
CO3040

Comando
Remote control



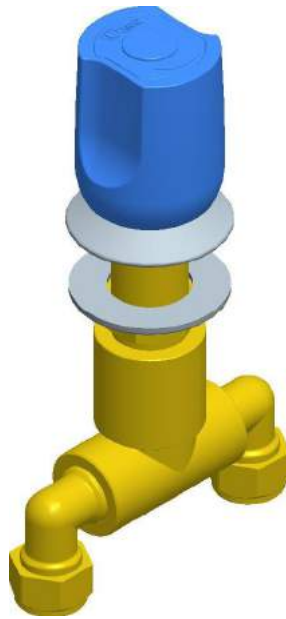
C03041

Comando con flessibili
Remote control with flex



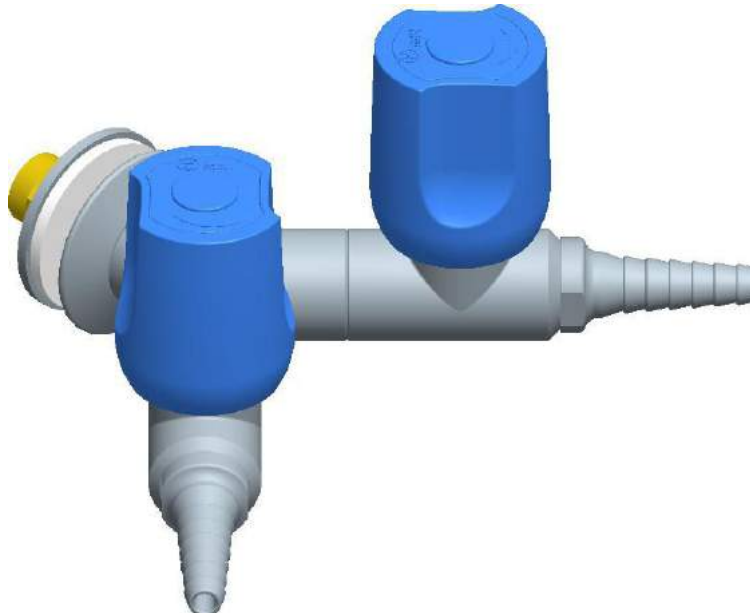
C03046

Comando
Remote control



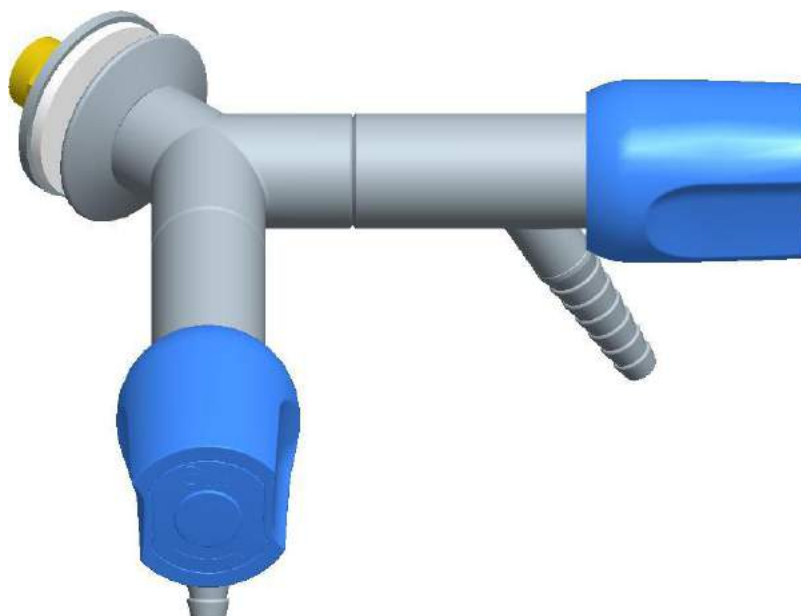
C03047

Comando con biconi
Remote control with connections



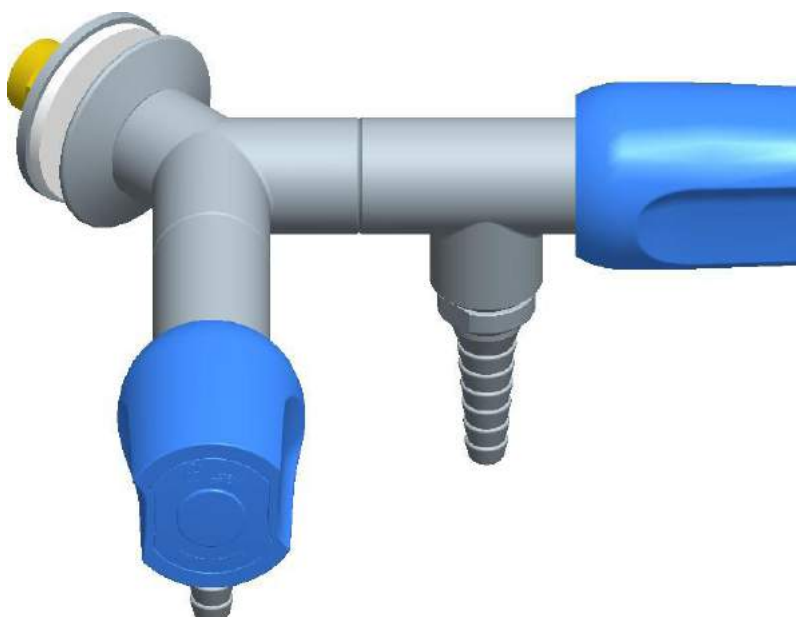
C03060

Colonna a V a parete con maniglie alte
Wall-mounted V standout with high handles



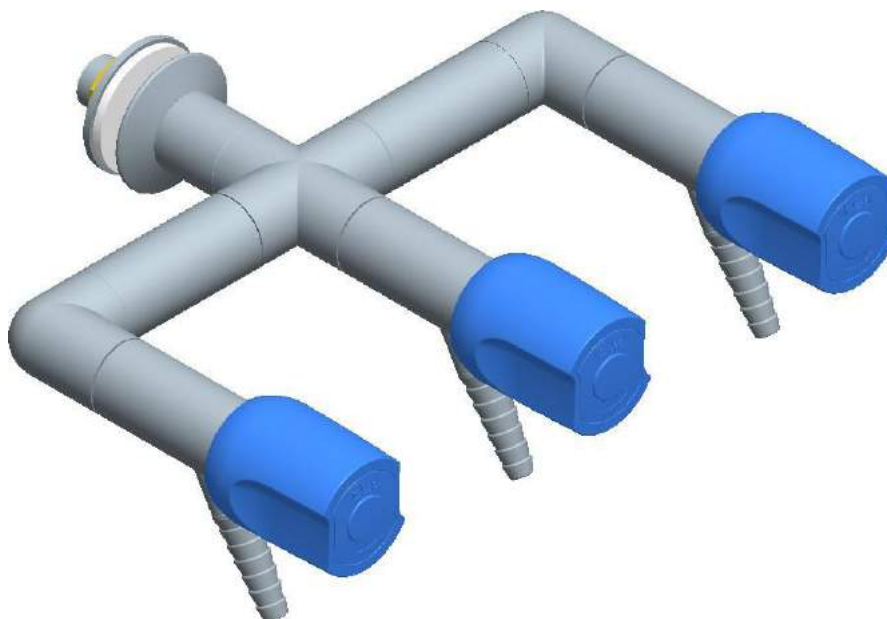
C03061

Colonna a V a parete con maniglie frontali e portagomma 45°
Wall-mounted V standout with 45° nozzle and frontal handles



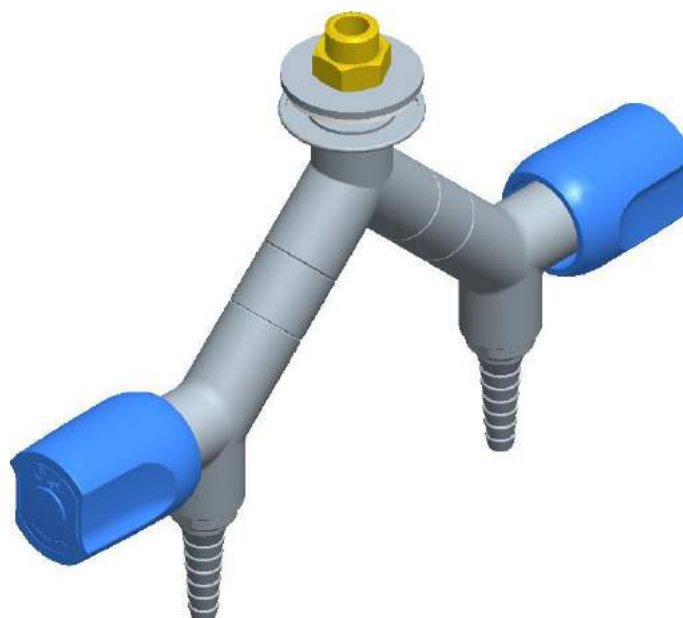
C03062

Colonna a V a parete con maniglie frontali e portagomma 90°
Wall-mounted V standout with 90° nozzle and frontal handles



CO3063

Colonna 3 vie a parete con maniglie frontali e portagomma 45°
Wall mounted 3-way stand out with 45° nozzle and frontal handles



CO3064

Colonna a V verticale con maniglie laterali
Vertical V stand out with side handles

SPECIFICHE TECNICHE, RUBINETTI PER GAS TECNICI

Utilizzo di barra ottone forata conforme alla norma EN 12168 e barra ottone piena conforme alla norma EN 12164, materiale stampato ricavato da barra piena EN 12165.

La rubinetteria per gas tecnici è fornita di vitone a fine regolazione con tenuta in PTFE.

Portagomma fisso secondo la norma DIN 12898.

Maniglie prodotte in polipropilene, materiale antiacido. Colorazione delle maniglie secondo la norma EN 13792.

Filettature secondo la norma ISO 228/1, classe di tolleranza B.

Rubinetteria costruita secondo la norma DIN 12918.

Pressione massima di utilizzo 7 bar.

La rubinetteria per ossigeno viene fornita di vitone lubrificato con grasso specifico.

RUBINETTI GAS TECNICI

| | | |
|--|--|--|
| Importante: indicare <u>sempre</u> gas/fluido esempio: CO 3001 vuoto oppure CO3060 aria compressa | | |
| Fornitura standard | Alternative senza modifica prezzo | Alternative con modifica prezzo |
| Portagomma fisso | Portagomma svitabile Indicare di seguito al nostro articolo S esempio: CO3004S | |
| Vitone a fine regolazione con tenuta in PTFE | | Vitone per ossigeno Indicare di seguito al nostro articolo VO esempio: CO3010VO |
| Gamba 3/8" mm. 30 rubinetti a parete e mm. 80 rubinetti da banco | Gamba 1/2" mm. 30 rubinetti a parete e mm. 80 rubinetti da banco Indicare di seguito al nostro articolo 1/2" esempio: CO3011 1/2" | |
| | | A fronte di particolari esigenze, si possono inoltre apportate ulteriori modifiche per esempio di altezze, interassi ecc. Valutabili su specifica richiesta |